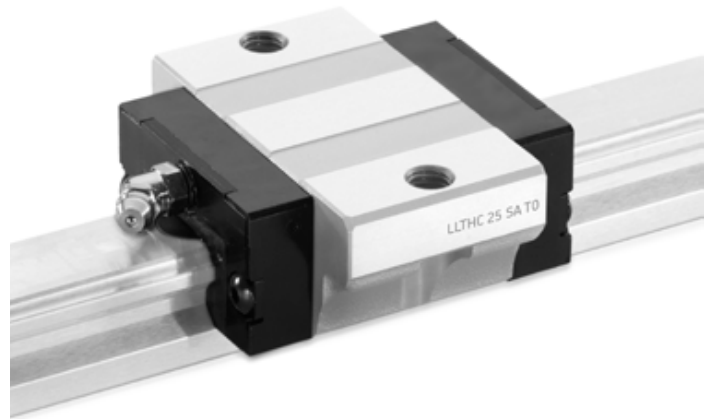


### 3.1.1 Carriage LLTHC ... SA

Flanged carriage, short length, standard height.

Carriages from size 15 to 30 are also available with low friction S0 shield. Dimensions are the same as standard version. For designation, refer to **Ordering key carriages** (→ page 103).



#### Technical data

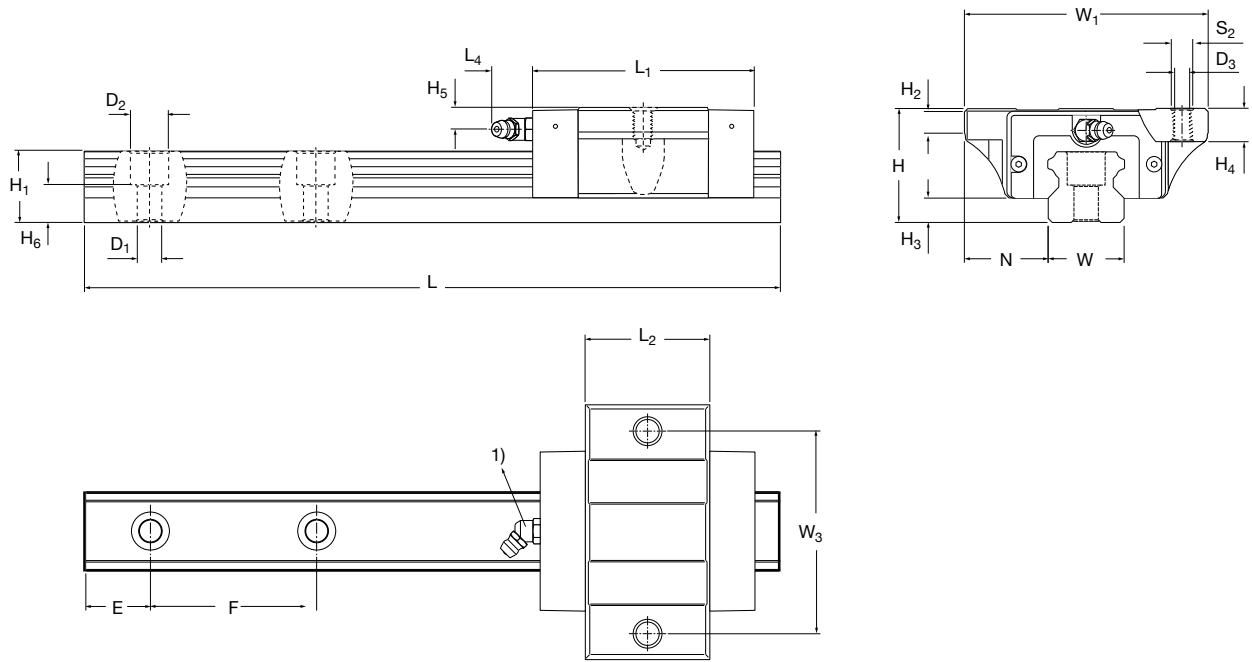
Size	Precision class	Designation <sup>1)</sup> Preload class T0	T1
–		–	
15	P5	LLTHC 15 SA T0 P5	LLTHC 15 SA T1 P5
	P3	LLTHC 15 SA T0 P3	LLTHC 15 SA T1 P3
	P1		LLTHC 15 SA T1 P1
20	P5	LLTHC 20 SA T0 P5	LLTHC 20 SA T1 P5
	P3	LLTHC 20 SA T0 P3	LLTHC 20 SA T1 P3
	P1		LLTHC 20 SA T1 P1
25	P5	LLTHC 25 SA T0 P5	LLTHC 25 SA T1 P5
	P3	LLTHC 25 SA T0 P3	LLTHC 25 SA T1 P3
	P1		LLTHC 25 SA T1 P1
30	P5	LLTHC 30 SA T0 P5	LLTHC 30 SA T1 P5
	P3	LLTHC 30 SA T0 P3	LLTHC 30 SA T1 P3
	P1		LLTHC 30 SA T1 P1
35	P5	LLTHC 35 SA T0 P5	LLTHC 35 SA T1 P5
	P3	LLTHC 35 SA T0 P3	LLTHC 35 SA T1 P3
	P1		LLTHC 35 SA T1 P1

1) • Preferred range.

- Only available as system.

For designation, please refer to designation system.

Dimensional drawing



Size	Assembly dimensions					Carriage dimensions								
	W <sub>1</sub>	N	H	H <sub>2</sub>	H <sub>3</sub>	L <sub>1</sub>	L <sub>2</sub>	L <sub>4</sub>	W <sub>3</sub>	H <sub>4</sub>	H <sub>5</sub>	D <sub>3</sub>	S <sub>2</sub>	
-	mm													
15	47	16	24	5,9	4,6	48,9	25,6	4,3	38	8	4,3	4,3	M5	
20	63	21,5	30	6,9	5	55,4	32,1	15	53	9	5,7	5,2	M6	
25	70	23,5	36	11	7	66,2	38,8	16,6	57	12	6,5	6,7	M8	
30	90	31	42	9	9	78	45	14,6	72	11,5	8	8,5	M10	
35	100	33	48	12,3	9,5	88,8	51,4	14,6	82	13	8	8,5	M10	

Size	Rail dimensions										Weight		Load ratings <sup>2)</sup>		Moments <sup>2)</sup>			
	W	H <sub>1</sub>	H <sub>6</sub>	F	D <sub>1</sub>	D <sub>2</sub>	E <sub>min</sub>	E <sub>max</sub>	L <sub>max</sub>	carriage	rail	dynamic	static	dynamic	static	dynamic	static	
-	mm										kg	kg/m	N	N	Nm			
15	15	14	8,5	60	4,5	7,5	10	50	3 920	0,12	1,4	5 800	9 000	39	60	21	32	
20	20	18	9,3	60	6	9,5	10	50	3 920	0,25	2,3	9 240	14 400	83	130	41	64	
25	23	22	12,3	60	7	11	10	50	3 920	0,38	3,3	13 500	19 600	139	202	73	106	
30	28	26	13,8	80	9	14	12	70	3 944	0,56	4,8	19 200	26 600	242	335	120	166	
35	34	29	17	80	9	14	12	70	3 944	0,83	6,6	25 500	34 800	393	536	182	248	

<sup>1)</sup> For detailed information on grease nipples, please refer to page 70.

<sup>2)</sup> Dynamic load capacities and moments are based on a travel life of 100 km. Please refer to page 15 for further details.